

DATE	REV.	AMENDMENTS



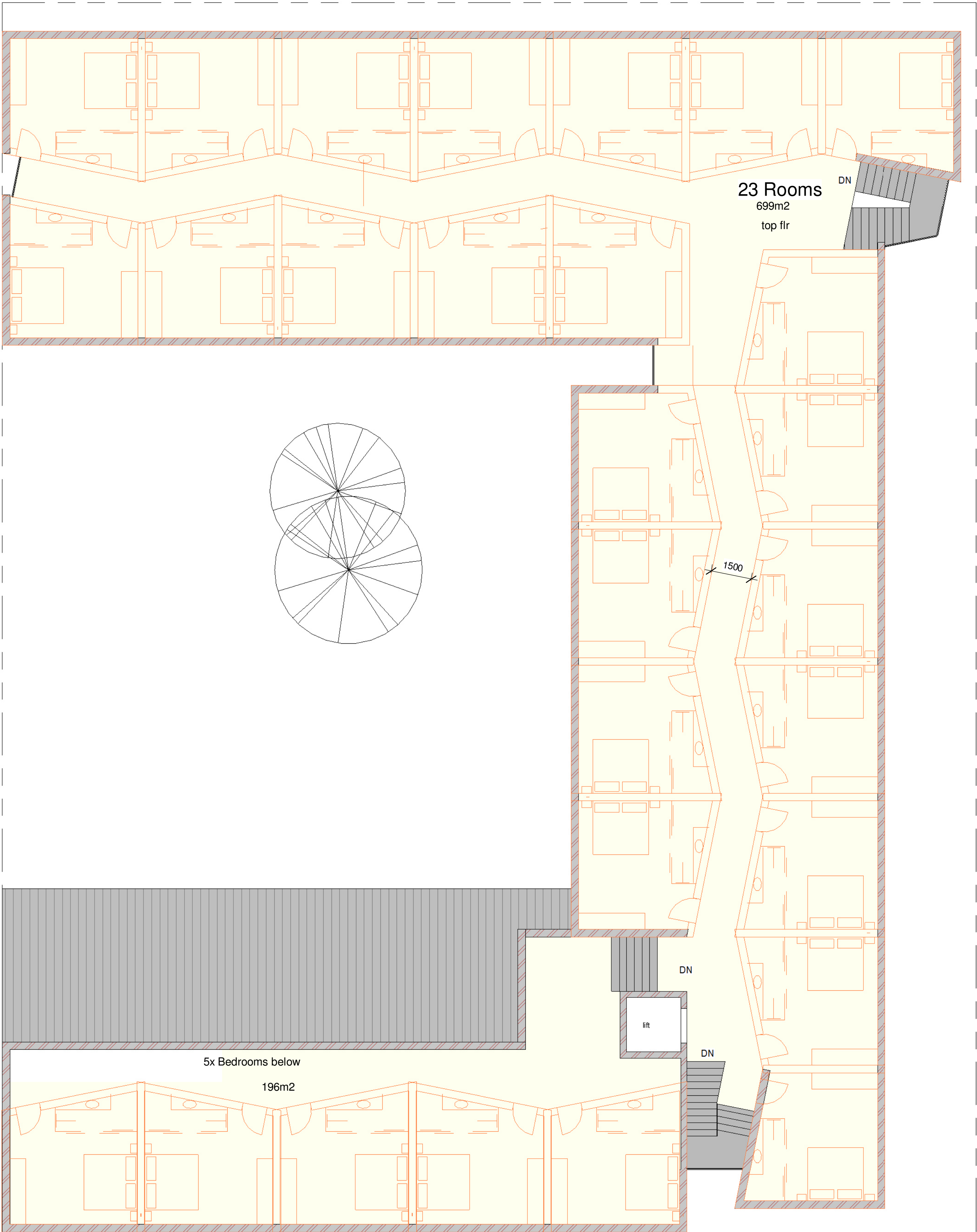
paul oosthuizen architects cc

dulcy centre, cnr. jackson & high str. plettenberg bay, 6600  
t +27(0)44 533 6381 f +27(0)44 533 6389  
paul@pauloosthuizen.co.za

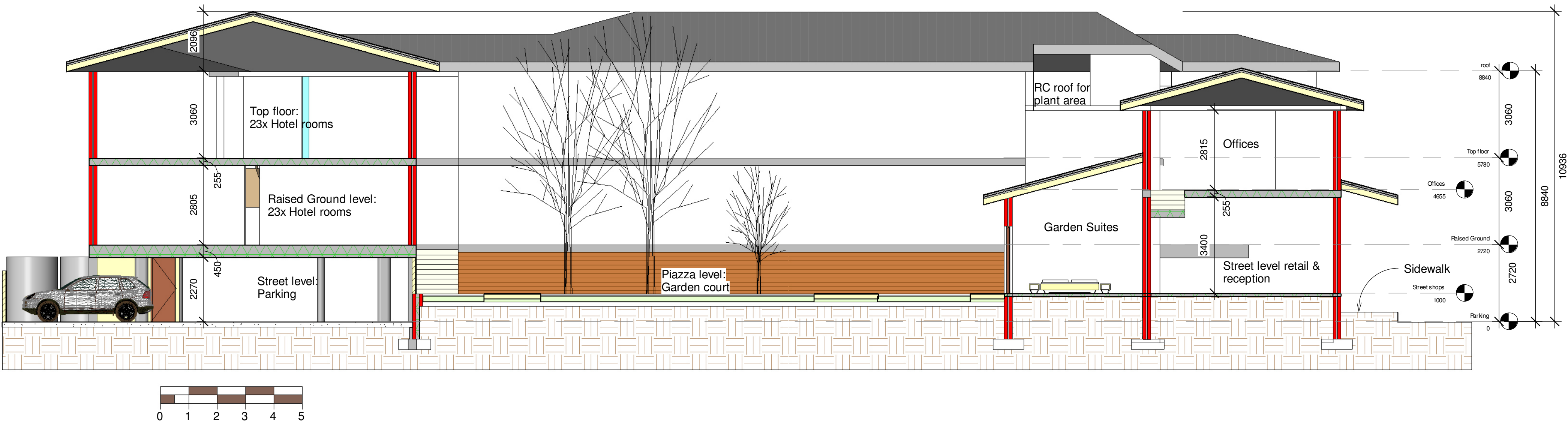
SAIA 7540 / SACAP 6259

project: The Rex Extension

des.	1st Floor & Section	JOB NR.	DWG. NR.	REV.
scale	1 : 100			
drawn by	PO	1402	S103	D
checked by	PO			
date	07 May 2015			



1 Top floor100  
1 : 100



2 Section 1  
1 : 100